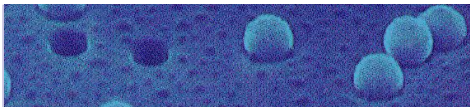


# C R C :

Cyclotron Resource Centre

## WHAT WE OFFER : services and expertise

- Ion beams from the cyclotron CYCLONE 110
  - Protons up to 65MeV
  - Heavy ions up to Xe
  - Neutrons beam
- Cobalt-60 gamma irradiation
- Accelerator technologies and ion beam interaction expertise



### Track-etched membranes

- Rolls irradiation
- Ar, Kr or Xe beam available



### Heavy ions cocktail

- 9.5MeV/nucleon cocktail
- From Carbon to Xenon
- Up to  $1.5E4$  ions/s.cm<sup>2</sup>
- 25mm diameter beam



### Protons beams

- From 10 to 62MeV
- 80mm diameter beam
- Up to  $2E8$  p+/s.cm<sup>2</sup>



### Neutrons beam

- Broad energy spectrum
- Up to  $3E9$  n/s.cm<sup>2</sup>
- Average energy 23MeV



### Gamma irradiation

- Co-60 source
- Panoramic irradiator
- Up to 360rad/h [Si]

## CONTACT

*Platform manager*

**Nancy Postiau**

nancy.postiau@uclouvain.be

+32(0)10/47.38.74

[www.uclouvain.be/crc](http://www.uclouvain.be/crc)

(1) Casemate – (2) Neutrons facility – (3) Heavy ion facility – (4) ECR ion source – (5) Track-etched membranes



Bâtiment De Hemptinne  
Chemin du Cyclotron, 2 bte L7.01.05  
1348 Louvain-la-Neuve  
Belgium

