

# The Blue Deal

Transforming water  
management and use in  
Flanders

**Krista Decat**

Blue Deal Programme coordinator

Coordination Committee on Integrated Water Management



# The state of play in Flanders

## High water stress

- Low water availability
- High degree of soil sealing
- Water-intensive economy
- Water management focused on drainage

**25 COUNTRIES ARE CURRENTLY EXPOSED TO EXTREMELY HIGH WATER STRESS ANNUALLY**

BASELINE WATER STRESS



BASELINE WATER STRESS

COUNTRY RANKING, 2019

Extremely High (>80%)

1. Bahrain
2. Cyprus
3. Kuwait
4. Lebanon
5. Oman
6. Qatar
7. United Arab Emirates
8. Saudi Arabia
9. Israel
10. Egypt
11. Libya
12. Yemen
13. Botswana
14. Iran
15. Jordan
16. Chile
17. San Marino
18. Belgium
19. Greece
20. Tunisia
21. Namibia
22. South Africa
23. Iraq
24. India
25. Syria

Source: [wri.org/aqueduct](http://wri.org/aqueduct)

AQUEDUCT™

WORLD RESOURCES INSTITUTE

Integraal Waterbeleid  
Samen werken aan water



Vlaanderen  
is water

# Impacts visible today



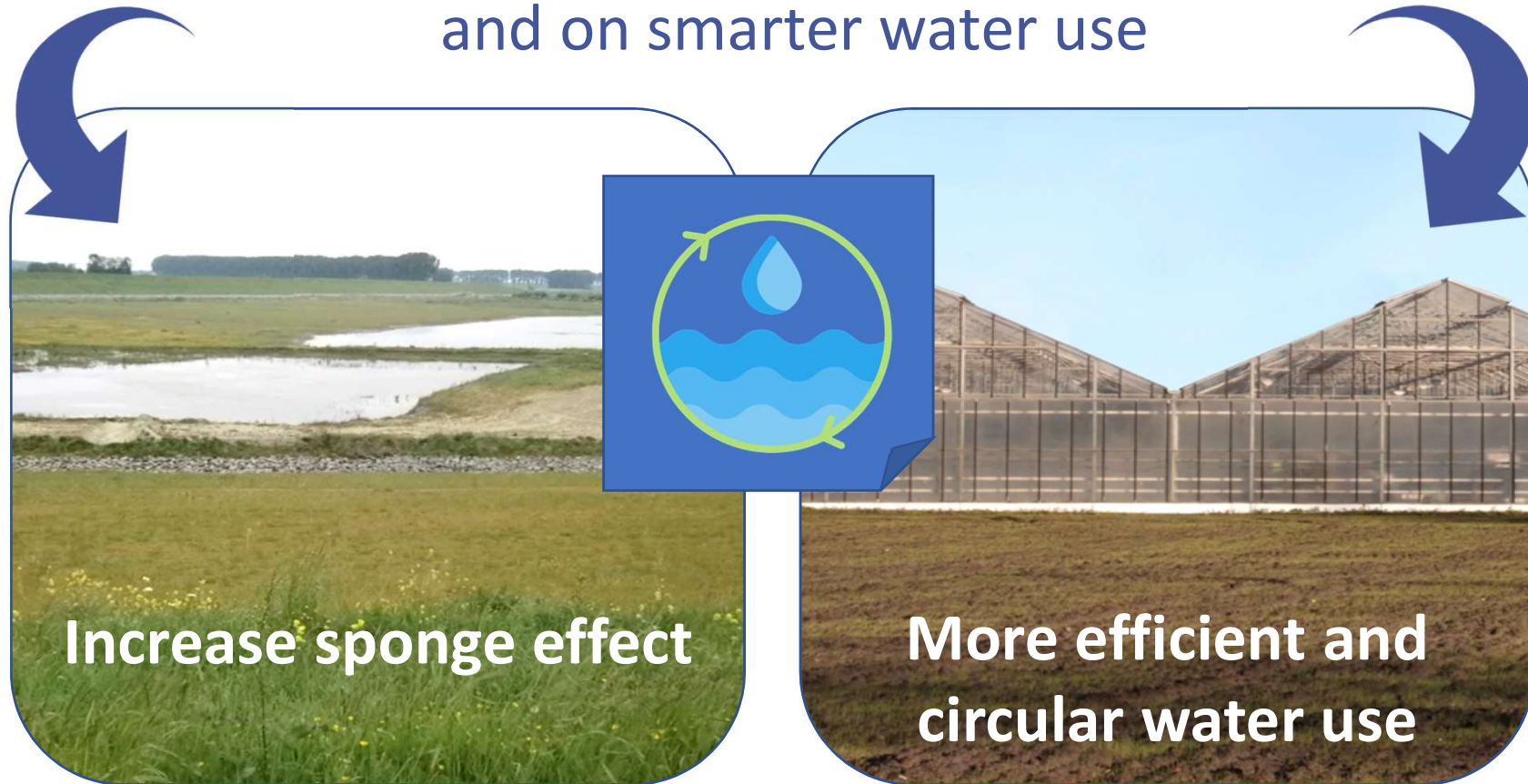
# Blue Deal: what and why

- Ambitious programme with structural and proactive actions to prevent drought and water scarcity in Flanders
- More resilient and climate-robust water system
- A better balance between water supply and demand

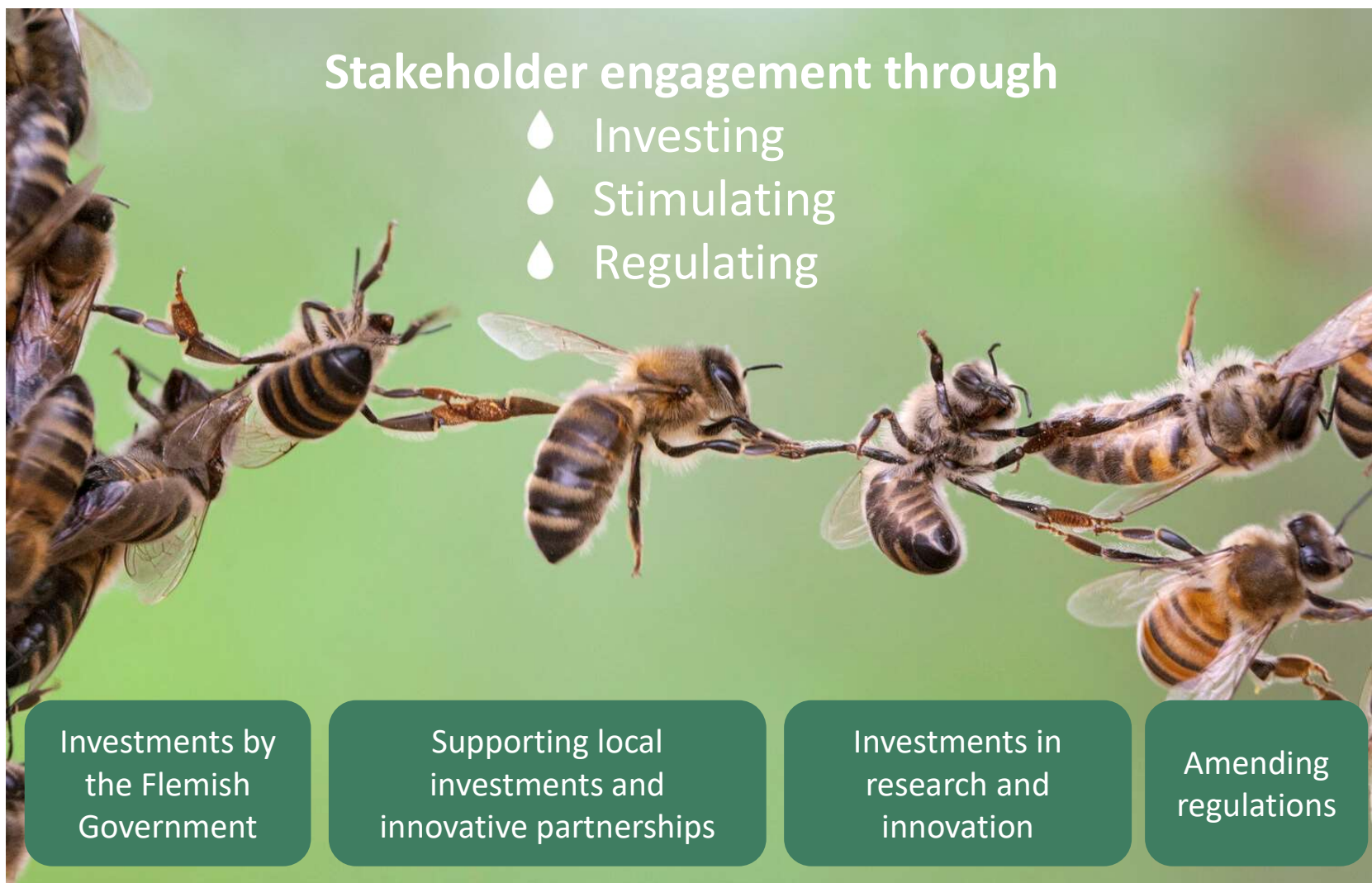


# Blue Deal = a systemic approach

Blue Deal focuses on increased water availability  
and on smarter water use

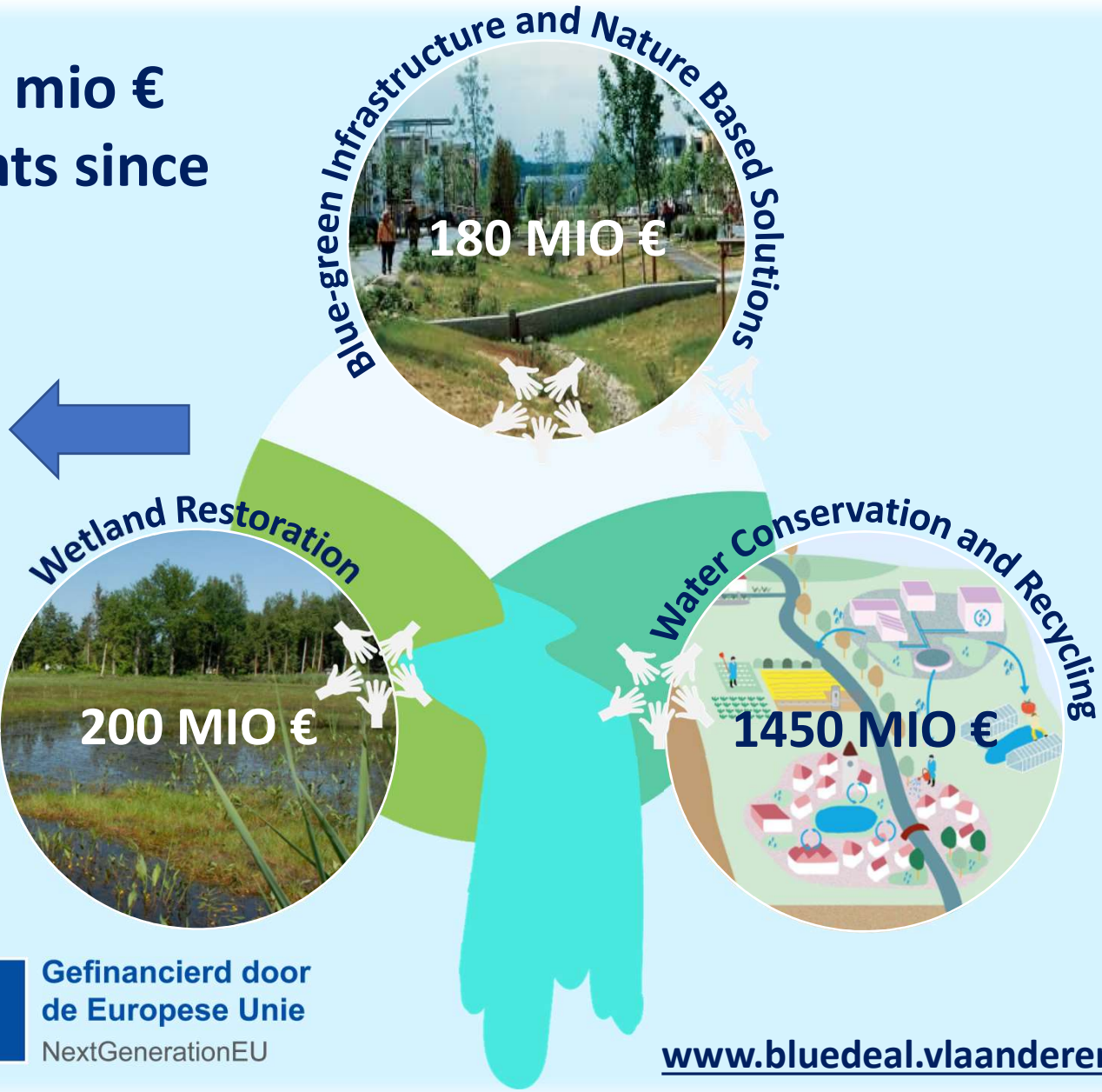


# Blue Deal: leverage for broad-based dynamics



# Blue Deal: +500 mio € extra investments since 2020

Impact  
monitoring to  
evaluate on-site  
realisations



DE VLAAMSE  
VEERKRACHT



Gefinancierd door  
de Europese Unie  
NextGenerationEU

[www.bluedeal.vlaanderen](http://www.bluedeal.vlaanderen)

# Innovative partnerships

## ▶ Water+Land+Scape 2.0

- **Financial support for measures and capacity building** to tackle drought and water scarcity in rural areas in an area-based manner
- **Stimulating partnerships and coalitions** between companies, local authorities, farmers, associations, engineering firms, research institutions, water managers, ...
- path 1 – **testing innovative measures**
- path 2 – **implementing area-based programmes**
- budget: 25 mio €

# WATER+LAND+SCHAP



# Blue Deal: impact

Restoring natural watercourses

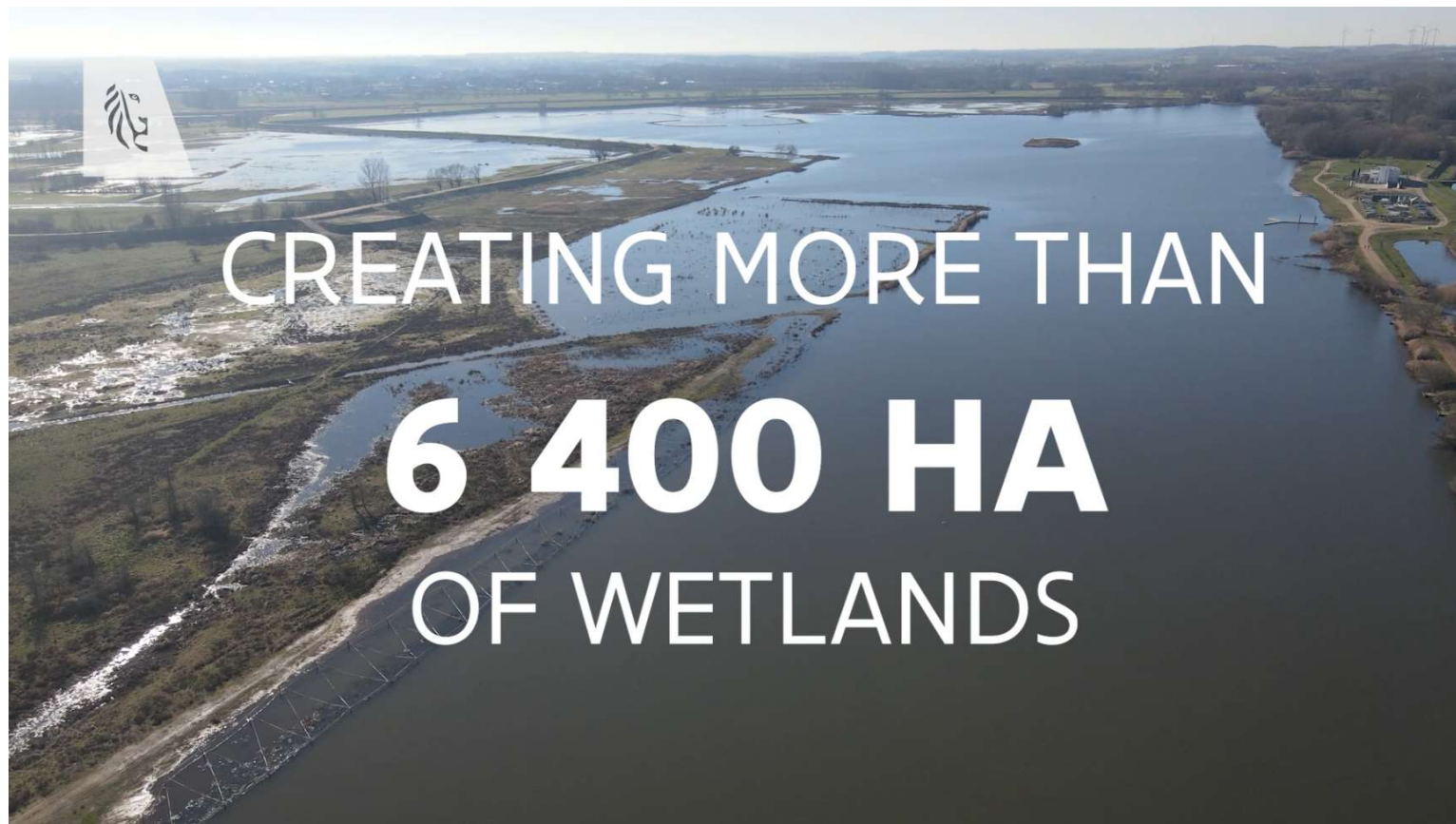


RESTORING  
**88 KM**  
OF BLUE INFRASTRUCTURE



# Blue Deal: impact

## Restoring wetlands



# Blue Deal: impact

Agriculture: storing water underground



# Blue Deal: impact

Adjusting drainage of paved areas



# Blue Deal: impact

Rain water storage and re-use



# Blue Deal: impact

Circular water use





**More information on**  
[bluedeal.vlaanderen/about-blue-deal](https://bluedeal.vlaanderen/about-blue-deal)

**Integraal Waterbeleid**  
Samen werken aan water



**Vlaanderen**  
is water